



LOUISIANA
ENDOWMENT
FOR THE
HUMANITIES
2024 ANNUAL REPORT

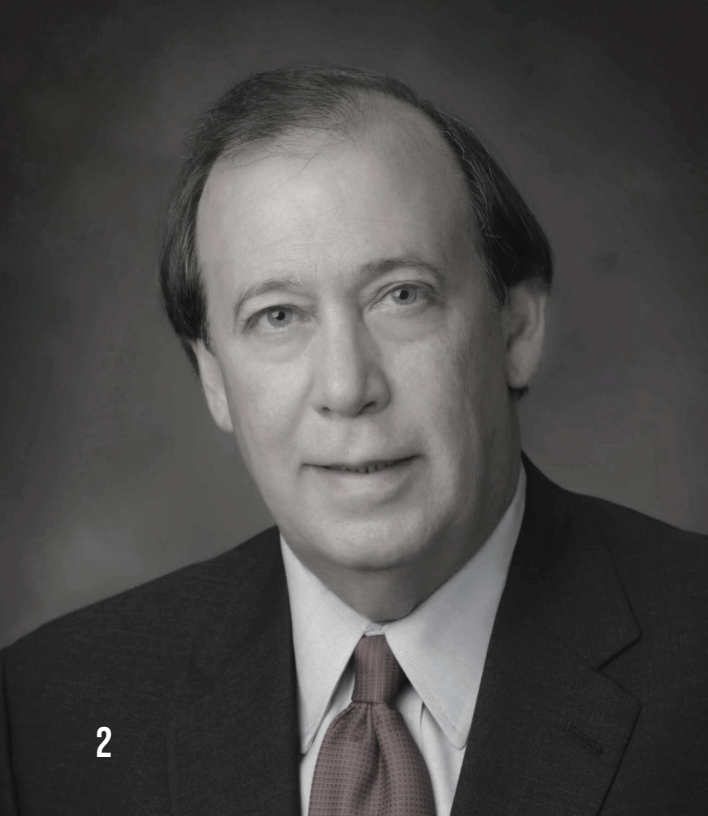


Participants charge from farm to farm as they quest for the ingredients for tonight's supper.
PHOTO BY BARRY ANCELET.



Table of Contents

Vision, Mission, and Values	3
Bright Lights: 2024 Awardees	4
What We Do: 2024 Initiatives and Accomplishments	13
How We Do It: Our Resources and Advocates	28
Donors, Supporters, and Partners	29
Program Partners	31
Staff and Governance	35



Dear Friends of the Humanities,

While visiting south Louisiana and taking part in the wild festivities of Cajun Mardi Gras, famed chef, author, and travel documentarian Anthony Bourdain said that Louisiana is “much loved but largely misunderstood.” Our work at the Louisiana Endowment for the Humanities, which calls us to explore Louisiana’s past, reflect on our present, and imagine our future, is the antidote to this incongruous perception. We believe that to truly love Louisiana is to know it.

In 2024, we doubled down on our mission by bringing Louisiana traditions, histories, and communities to life for locals and visitors, veterans and seniors, students and educators. Whether in the pages of award-winning *64 Parishes* magazine, or online through the ever-expansive *64 Parishes* encyclopedia, in our Prime Time classrooms, or in community spaces where our grantees bring unique Louisiana experiences to life, we are in pursuit of knowing and sharing Louisiana.

In 2024 alone, through LEH-funded programs or our signature initiatives, such as The Helis Foundation John Scott Center, we shared Louisiana stories and culture with nearly 3 million people across every region of our state. Furthermore, the online encyclopedia of Louisiana history and culture and *64 Parishes* magazine online reached an additional 1.1. million people in the United States and 221 countries across six continents.

We demonstrated our love for Louisiana by making significant investments in our award-winning education initiatives such as Prime Time Family Reading and the Institute for Louisiana Culture and History, reaching students, educators, and families with high-quality education resources. And we continued to prioritize emergency readiness and operational support for Louisiana’s cultural organizations, without whom our work would not be possible.

Our work is persistent and relentless as we seek to understand and share this strange and marvelous place we call home. Because to know Louisiana is to love it!

Sincerely,

MIRANDA RESTOVIC
President/Executive Director, LEH
Executive Director, Prime Time, Inc.

RANDY HAYNIE
Chair, LEH Board of Directors

TOP: LEH President/Executive Director Miranda Restovic.
PHOTO BY KATHY ANDERSON.

BOTTOM: LEH Board Chair Randy Haynie.



OUR VISION

Everyone can realize their full potential through the humanities.

OUR MISSION

The Louisiana Endowment for the Humanities partners with communities, institutions, and individuals to explore Louisiana's past, reflect on our present, and imagine our future.

OUR HOME

Turners' Hall, located in the heart of downtown New Orleans, has been LEH's headquarters since 2000. The first floor of Turners' Hall is now The Helis Foundation John Scott Center, a venue displaying the art of New Orleans native John Scott and serving as a venue for community learning and engagement.



Our Values

EXCELLENCE

We believe in the pursuit of excellence at every level of our organization. We engage in constant feedback and reflection, never assuming a process has been perfected. In our pursuit of excellence, we are committed to both process and results.

EQUITY

We believe the richness of Louisiana's culture is derived from its people. We encourage our communities, partners, staff, and stakeholders to reflect, listen, and learn from one another's diverse experiences. Our responses to both internal and external needs demonstrate our commitment to sharing resources, expanding access, and reducing disparities through the humanities.

COURAGE

We believe in boldly advancing our mission in new and established ways. Being courageous requires us to be responsive to the needs of the state and communities we serve and calls for calculated risk-taking and innovation. We commit to open communication and accountability to our colleagues, partners, constituents, and stakeholders.

STEWARDSHIP

We believe in the power of collective knowledge. We embrace our role as stewards of Louisiana stories and recognize our responsibility to distribute the assets entrusted to us in collaboration with the communities, families, individuals, and institutions whose experiences, expertise, and financial commitments shape our work.



Dickie Landry.
PHOTO BY BRIAN PAVLICH.

Bright Lights

Since 1985, the LEH has honored Louisianans who have made outstanding contributions to the study and understanding of the humanities.

HUMANIST OF THE YEAR

A native of Cecilia, Louisiana, in St. Martin Parish, **Dickie Landry** is a true Renaissance man whose talents range from documentary photography and abstract painting to saxophone-playing and composing. Across his 60-year career, Landry has used his camera to document New York's art scene, opened exhibitions for artist Robert Rauschenberg, and performed as part of the legendary Philip Glass Ensemble.

He is also a connector, someone who has used his network to promote and elevate his fellow Louisiana musicians to the national and international spotlight. He helped organize a concert for Clifton Chenier at Carnegie Hall in the 1970s and connected Paul Simon with Terrance Simien for his zydeco-tinged, award-winning 1986 "Graceland" album. In 2018, he was inducted into the Louisiana Music Hall of Fame. Now in his 80s, Landry continues to perform, create, and push boundaries.

CHAIR'S AWARD FOR INSTITUTIONAL SUPPORT

The Charles Lamar Family Foundation supports a multitude of strong and dynamic nonprofit organizations that address important aspects of community life and effect positive change in their communities. Since learning about the work of the LEH after attending an LEH Board Outreach party in 2019, the Lamar Family Foundation has generously supported Prime Time Family Reading programs in the Greater Baton Rouge area, increasing the number of programs offered and launching Prime Time Box distribution in the community.



CHAMPION OF CULTURE AWARD

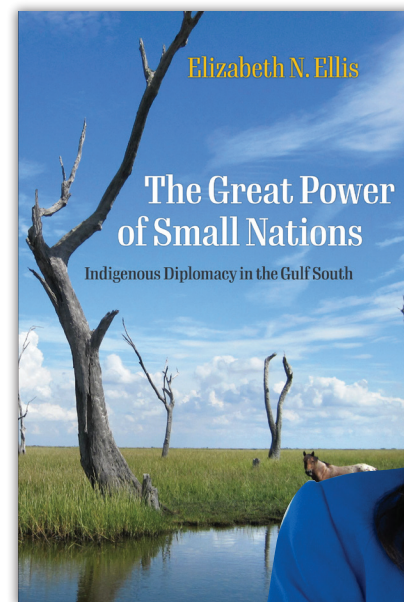
Dr. Nick Mueller is a military historian and former University of New Orleans administrator who, along with historian Stephen Ambrose, helped create the National D-Day Museum. The museum, launched in 2000, became the National World War II Museum in 2006 and is now one of the country's top museum destinations. Mueller served as the museum's founding president/CEO and, during his 19-year tenure, oversaw much of its expansion from a single 19th-century warehouse structure to a six-acre campus that welcomes more than 700,000 visitors per year.



Gordon H. "Nick" Mueller is the 2024 Champion of Culture.
PHOTO BY JEFF JOHNSTON.

HUMANITIES BOOK OF THE YEAR

In *The Great Power of Small Nations* (published by the University of Pennsylvania Press), Dr. Elizabeth Ellis, an enrolled citizen of the Peoria Tribe of Indians of Oklahoma, tells the story of the smaller Native American Nations that shaped the growth of colonial Louisiana and continue to shape the Gulf South today.



Elizabeth N. Ellis.
PHOTO BY ZOE MCWHIRTER.





A Boat Sits Upside Down in
Venice, Plaquemines Parish.
PHOTO BY BEN DEPP.



DOCUMENTARY PHOTOGRAPHER OF THE YEAR

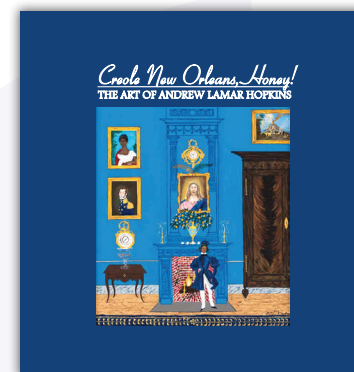
National Geographic Explorer **Ben Depp** captures Louisiana's changing coast from a paraglider, forcing the viewer to shift their perspective along with his. Depp's photography has been funded by the Pulitzer Center for Crisis Reporting. His work has been published in Smithsonian Magazine, Scientific American, and National Geographic as well as in *Tide Lines: A Photographic Record of Louisiana's Disappearing Coast*, a compilation of Depp's work published in January 2023, by University Press of Mississippi.



PHOTO BY CARROLL GREVEMBERG, LOUISIANA STATE MUSEUM.

MUSEUM EXHIBITION OF THE YEAR

The Louisiana State Museum at the Cabildo's ***Creole New Orleans, Honey!*** showcased the work of Andrew LaMar Hopkins, exploring notions of Creole identity while challenging the definition of the word.





HUMANITIES DOCUMENTARY FILM OF THE YEAR

Louisiana Public Broadcasting's *The Precipice* (directed by Ben Johnson and produced by Linda Midgett), follows the Pointe-au-Chien Indian Tribe in the Terrebonne Basin as they work to preserve their culture and language while seeking federal recognition. The film documents their efforts to mitigate the effects of extreme weather events on their community.

Still from *The Precipice*.
PHOTO COURTESY OF LOUISIANA PUBLIC BROADCASTING.



Jane Wolfe.
PHOTO BY CHERYL GERBER.

LIGHT UP FOR LITERACY AWARD

Jane Wolfe is the founder of Eat and Read at Melba's, one of New Orleans's most notable nonprofit literacy programs. Through Eat and Read at Melba's, Jane has encouraged a love of reading by distributing over 20,000 free books to her customers and hosting readings, discussions, and book-signings that connect New Orleanians with world-renowned authors and educators.

LIFETIME CONTRIBUTIONS TO THE HUMANITIES

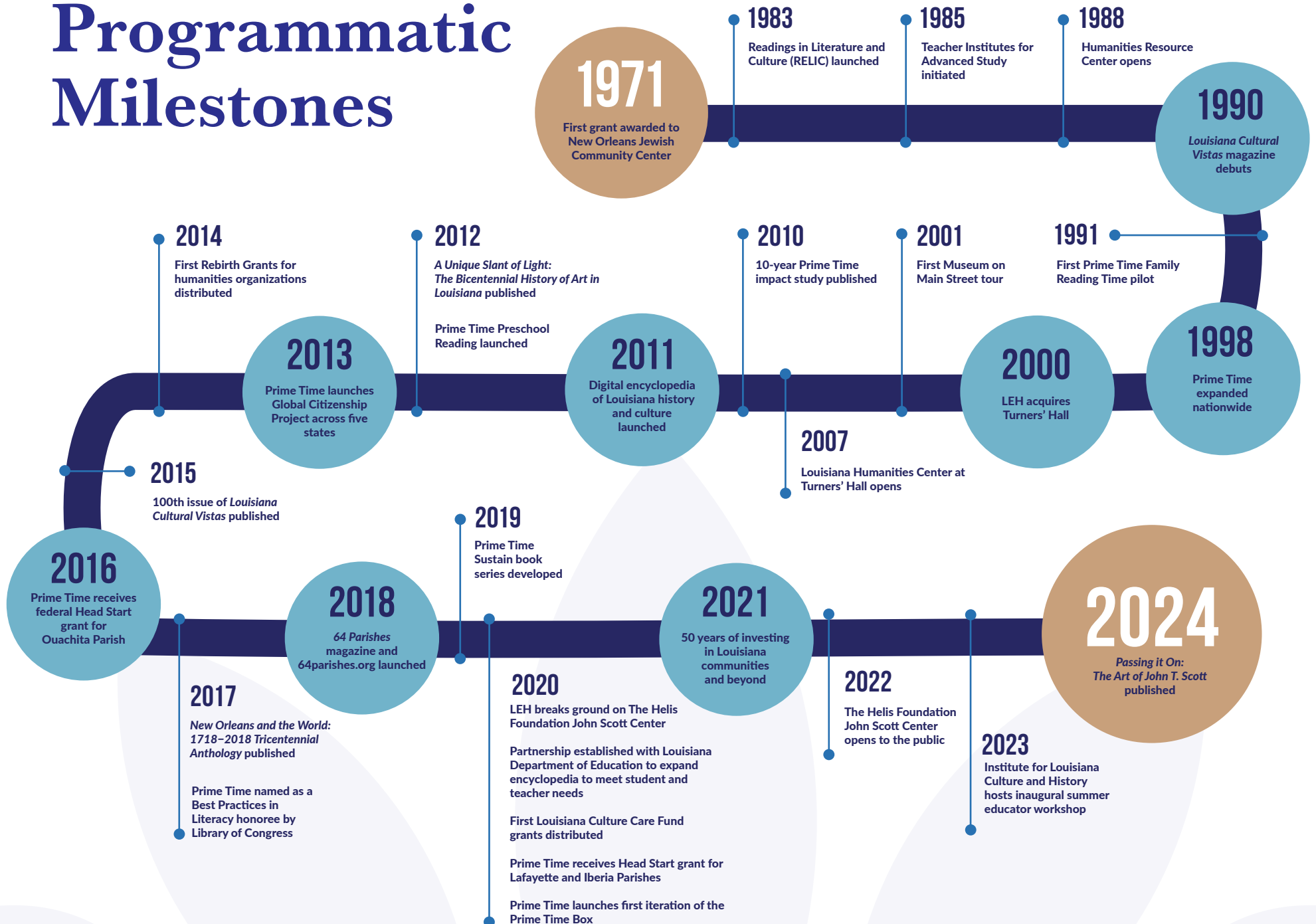
Freddi Williams Evans is an author and scholar recognized for her scholarship on Congo Square, a landmark of African and African American culture in New Orleans. In 2017–2018, Evans co-chaired the Committee to Erect Historic Markers on the Slave Trade to Louisiana.

Freddi Williams Evans.
PHOTO BY FREDDYE HILL.





Programmatic Milestones



2024 Impact Summary

OUR RECENT IMPACT

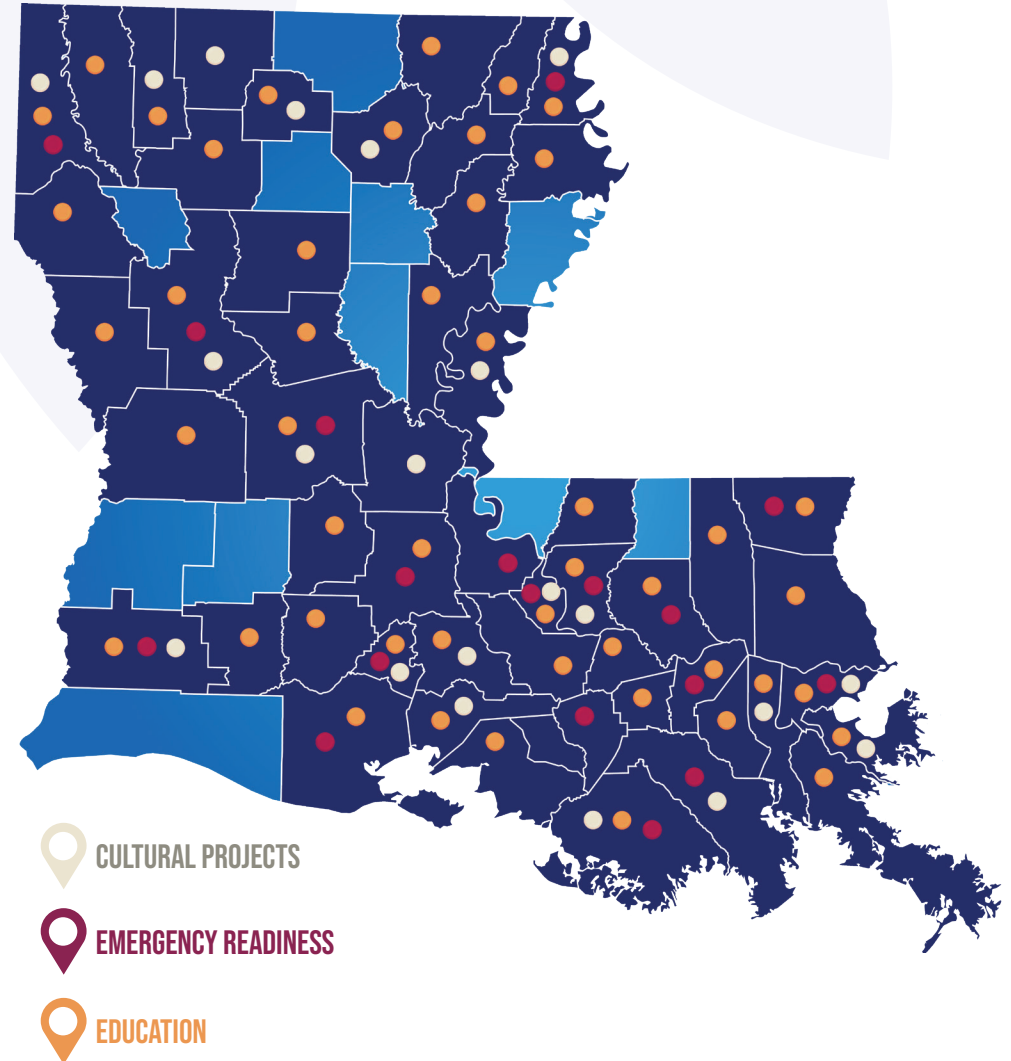
2,966,015
PEOPLE
REACHED

\$1,145,500
IN GRANTS
DISTRIBUTED

2,152
PROGRAMS
DELIVERED

54
PARISHES
REACHED

\$13.4 MILLION
INVESTED IN
EARLY CHILDHOOD
EDUCATION





Atchafalaya
NATIONAL
HERITAGE
AREA

WBR Parks & Recreation
MISSION STATEMENT
It is our goal, as the West Baton Rouge
Parks & Recreation Department to create more
opportunities for growth and enhancement
developing diverse services and programs
community involvement and
collaborating with
the physical, social
of our residents

YOGA 6PM
IN THE BRICK GALLERY

WBR Parks & Recreation
MISSION STATEMENT
It is our goal, as the West
Parks & Recreation Department
opportunities for growth
developing diverse services
community involvement
citizenship
the physical
of our

What We Do

2024 INITIATIVES AND ACCOMPLISHMENTS

A 2024 Institute for Louisiana Culture and History
regional workshop takes place in Port Allen at
West Baton Rouge Museum.
PHOTO BY PAUL KIEU.



Public Programs

The Division of Public Programs partners with individuals and organizations to create, disseminate, and explore cultural content all about Louisiana. The division's major initiatives and areas of work include *64 Parishes* magazine, 64parishes.org online encyclopedia, and LEH-developed programs such as the Institute for Louisiana Culture and History (ILCH), which provides valuable resources and professional development opportunities for K–12 students and educators.

2024 DIVISION HIGHLIGHTS

In 2024 the Public Programs division continued its implementation of the Institute for Louisiana Culture and History (ILCH), which includes resources and professional development workshops on Louisiana history content for K-12 public school educators. The goals of ILCH are to ensure that every Louisiana student has access to free digital social studies content and that every Louisiana educator receives the support necessary to bring that content to the classroom. ILCH marshals the power of technology with hands-on learning to provide in-depth, standards-aligned teacher training and free classroom resources specifically developed for student use. In its third year of programming, ILCH trained over 200 educators in 40 of Louisiana's 64 parishes using its new resources and methodology and was awarded the 2024 Schwartz Prize for outstanding work in the public humanities by the Federation of State Humanities Councils.

64Parishes.org, the free online encyclopedia of Louisiana history and culture, added 94 entries in 2024 and remains the first point of reference for students, teachers, researchers, journalists, and members of the general public seeking reliable, peer-reviewed information about people, places, events, institutions, and traditions in Louisiana. Magazine and online content covered 45 of Louisiana's 64 parishes. We continued to grow the audiences of *64 Parishes* both in print and online, with nearly 1,200,000 page views across 221 countries!

Curriculum specialist Lindsay Bardes leads teachers at the 2024 summer Institute for Louisiana Culture and History workshop.
PHOTO BY JEFF STROUT.

Public Programs

2024 KEY TAKEAWAYS

94

NEW, STANDARDS-ALIGNED
ENCYCLOPEDIA ENTRIES

7

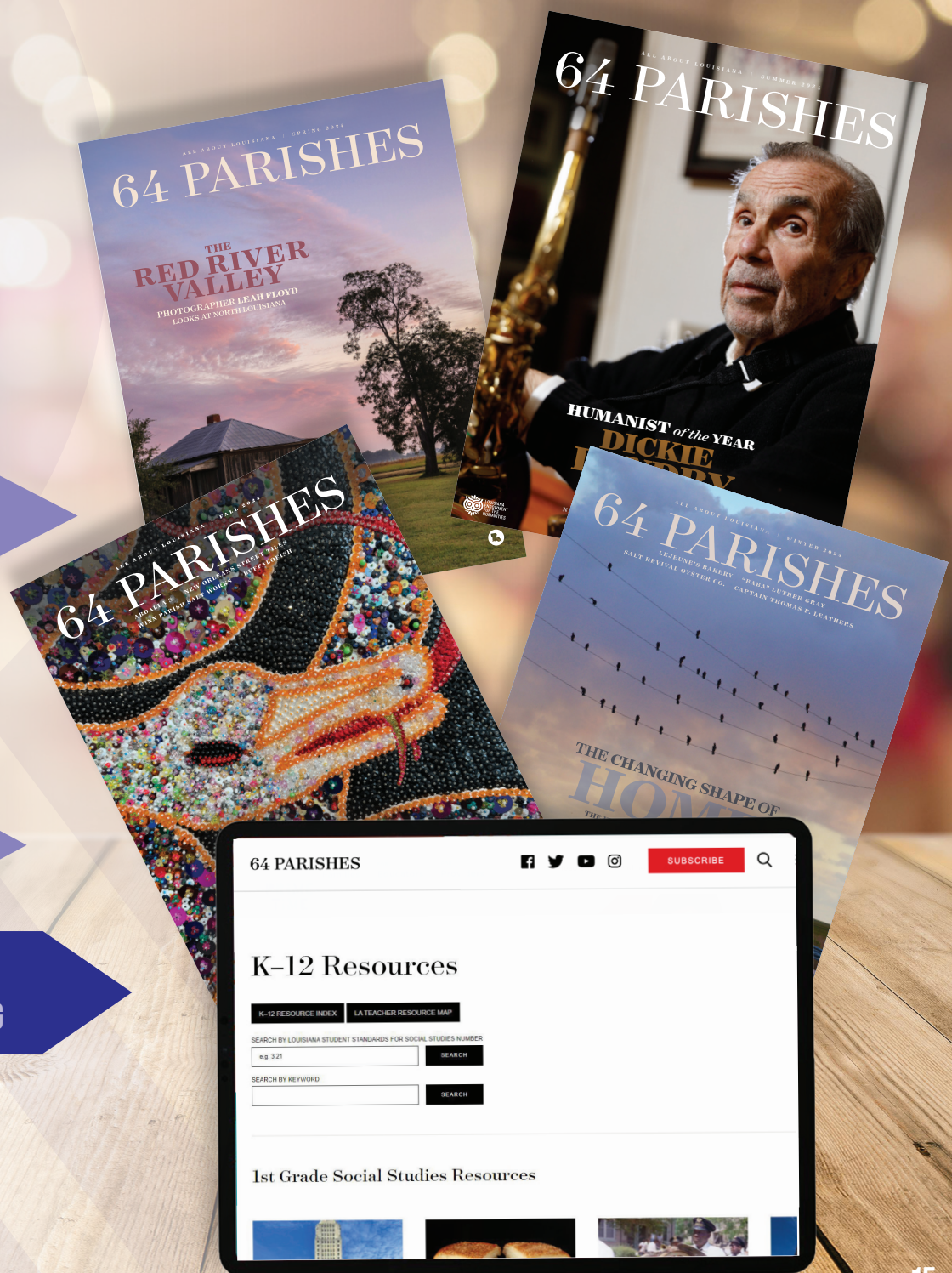
PUBLISHING AWARDS
FOR 64 PARISHES MAGAZINE

200

EDUCATORS TRAINED
IN 40 PARISHES

1.1 MIL+

PAGE VIEWS
ON 64PARISHES.ORG





Grants

The Division of Grants supports the vitality and sustainability of Louisiana's cultural landscape by awarding funds to eligible organizations and institutions throughout the state. These awards support large- and small-scale humanities public programs, from university events to those sponsored by museums, libraries, cultural centers, historical societies, and more.

2024 DIVISION HIGHLIGHTS

LEH serves as a pivotal resource for cultural organizations seeking to develop strategies for emergency preparedness while also identifying and addressing both physical and operational vulnerabilities. In 2024, the Grants Division administered eight grant programs awarding 94 grants in 27 parishes. Among these, \$230,000 in grants were distributed to support Louisiana's cultural organizations with emergency readiness and operational priorities, like staff retention and capacity building and professional reviews of emergency plans.

In 2024, the Grants Division also piloted a small grant opportunity for institutions of higher education to support Constitution Day activities. Constitution Day commemorates the signing of the United States Constitution on September 17, 1787. Organizations with existing or developing Constitution Day activities were invited to apply for grants of up to \$1,300 to cover costs related to their organization's Constitution Day programming. In August 2024, LEH awarded six grants totaling \$6,500 to institutions of higher education across five parishes for programming scheduled on or around Constitution Day 2024.



TOP: A frog race at the Rayne Frog Festival.

PHOTO BY CHRISTOPHER ROBERT.

BOTTOM: A visitor examines a family tree on view in Opelousas Museum's exhibit Free People of Color in St. Landry Parish.
COURTESY OF OPELOUSAS MUSEUM.

Grants

2024 KEY TAKEAWAYS

94

GRANTS AWARDED
ACROSS 8 GRANT PROGRAMS

26

LA CULTURAL AGENCIES STRENGTHENED
BY EMERGENCY PLANNING FUNDS

6

CONSTITUTION DAY PROGRAMS
SUPPORTED

\$607,500

AWARDED
ACROSS 27 PARISHES

TOP: Dancers at Rougarou Fest.
COURTESY OF ROUGAROU FEST.
BOTTOM: Panelists at the Tennessee Williams Festival.
COURTESY OF THE TENNESSEE WILLIAMS FESTIVAL.



Education Programs

The Division of Education promotes education for and with all Louisianans through programs such as Prime Time Family Reading, Preschool Reading, and Prime Time Boxes. Prime Time trains educators, parents, and other caregivers, using the power of stories, questions, and meaningful interactions to help children explore the world around them and become self-motivated learners.

2024 DIVISION HIGHLIGHTS

Across Louisiana, LEH hosted 119 Prime Time programs, collectively providing over 16,017 reading experiences in 29 parishes throughout the state. Parent engagement and whole family education have been pillars of Prime Time's approach to improving literacy outcomes for more than 30 years. In 2024, we continued our efforts to bring our proven strategies for improving literacy outcomes into homes.

The Education Division significantly expanded its Prime Time Box program, which is an asynchronous, home-based version of our live Prime Time Family and Prime Time Preschool reading programs. Over 300 Prime Time boxes were distributed across the state of Louisiana, equipping families with a series of quality children's books and an accompanying guide for parents to discuss the ideas in the books and complete educational activities with their children.

Two HomeRoom@Home workshops focused on empowering parents and caregivers in their roles as their child's first teacher were facilitated during summer and fall 2024. First developed and hosted (virtually) in 2020, HomeRoom@Home strengthens caregivers' ability to support their child's literacy development. In these small group workshops, professional educators and experienced Prime Time practitioners offer participating adults practical demonstrations and guidance in at-home reading and story discussion strategies. These high-impact workshops engaged 23 participants.

Participants at a Prime Time Preschool Reading session.
COURTESY OF PRIME TIME HEAD START.

Education

2024 KEY TAKEAWAYS

119

PRIME TIME READING PROGRAMS
IMPLEMENTED ACROSS LOUISIANA

22,500+

HIGH-QUALITY BOOKS
DISTRIBUTED TO LA FAMILIES

2,000+

FAMILIES' READING SKILLS
SUPPORTED + DEVELOPED

Participants at a Prime Time Family Reading program at Terrytown Elementary School.
COURTESY OF TERRYTOWN ELEMENTARY SCHOOL.



PRIME TIME

HEAD START

Prime Time Head Start and Early Head Start program works directly with families with young children to build a foundation for lifelong learning. Through partnerships and community collaborations, Prime Time Head Start and Early Head Start serves up to 635 children between the ages of six weeks and five years old in Lafayette and Iberia Parishes. This important work is implemented across four centers and 42 classrooms within Acadiana communities. Prime Time Head Start uses a comprehensive approach that includes preschool education, family services, and health programming while emphasizing a humanities-focused education.

2024 DIVISION HIGHLIGHTS

Prime Time proudly serves as an Early Head Start and Head Start provider in Iberia and Lafayette Parishes. Each year, the program sets ambitious kindergarten readiness and family support goals. Achieving these goals on behalf of our very young students requires the unified efforts of board and parent advisors (Policy Council), administrators, faculty/staff, parents/caregivers, and invaluable partners throughout the community. Throughout the school year, our program engages in data-driven monitoring practices that advance continuous improvement objectives and support goal attainment.

In June 2024, Prime Time Head Start's results from the Classroom Assessment Scoring System (CLASS) monitoring review indicated that our program performed above the Competitive threshold in all domains (emotional support, classroom organization, and instructional support). An even higher marker of success is Prime Time's performance above the CLASS Quality threshold in two of the three domains (emotional support and classroom organization)!

These significant outcomes could not have been achieved without the dedication of the staff, parents/caregivers, and stakeholders. Having administered this program since 2021, the LEH is exceedingly proud of all that's been accomplished in under five years. We look forward to building on these incredible gains alongside the community.

A Prime Time preschool participant.
PHOTO BY STAFF.

Head Start

2024 KEY TAKEAWAYS

4

HIGH-QUALITY HEAD START CENTERS
LOCATED IN 2 LOUISIANA PARISHES

155

STAFF POSITIONS
CONTRIBUTING TO THE STATE'S ECONOMIC HEALTH

774

CUMULATIVE STUDENTS EDUCATED
WITH AN AWARD-WINNING CURRICULUM

11,900+

FAMILY ENGAGEMENT HOURS
THROUGH ON-SITE AND AT-HOME ACTIVITIES

TOP: Prime Time Head Start students.
BOTTOM: Prime Time Head Start staff members, elected officials, and Louisiana Endowment for the Humanities board members celebrate the expansion of the facility at the Immaculate Heart of Mary campus in Lafayette.

PHOTOS BY STAFF.



The Helis Foundation John Scott Center

The Helis Foundation John Scott Center is LEH's interactive community space that honors the life and legacy of Louisiana native, artist, lifelong educator, and MacArthur Fellow (1992) John T. Scott. Housed in Turners' Hall, LEH's historic building in New Orleans' central business and arts district, the Center integrates arts and humanities programming unlike any other space in the Gulf South. In its inaugural exhibition, *Dancing at the Crossroads: The Art of John T. Scott*, the Center presents 51 works of art in a 6,000-square-foot space, illustrating Scott's visionary approach to art and storytelling.

2024 DIVISION HIGHLIGHTS

In 2024, the Center connected with 3,156 visitors and program participants across 113 programs and events, tours, field trips, private events, and general admissions with Scott's artwork as inspiration.

In October 2024, the Center published *Passing It On: The Art of John T. Scott*. Co-authored by Freddi Williams Evans and John Scott's widow, Anna Rita Scott, *Passing It On* broadens the impact of John Scott's dynamic legacy. *Passing It On* is a vibrant, 100+ page hardcover volume showcasing Scott's cutting-edge artwork and celebrated career. In keeping with Scott's commitment to knowledge-sharing, free copies of *Passing It On* are being distributed to New Orleans-area public libraries, schools, and community groups in spring 2025.

A copy of *Passing It On: The Art of John T. Scott* at the book launch.
PHOTO BY FRANK AYMAMI.



THFJSC

2024 KEY TAKEAWAYS

MAP

3,100+

TOTAL VISITORS IN 113 ENGAGEMENTS
IN-PERSON & ONLINE

1,900+

PARTICIPANTS
IN THFJSC-HOSTED PROGRAMS

1,200+

GUESTS TO THFJSC
ACROSS TOURS, FIELD TRIPS, & PRIVATE EVENTS

Photographer Sheila Pree Bright and Composer Hannibal Lokumbe
discuss John T. Scott's piece *I Remember Birmingham*.
PHOTO BY FRANK AYMAMI.



Institutional Advancement

Our Institutional Advancement team partners with individuals, corporations, and foundations to ensure the sustainability, accessibility, and growth of LEH's collaborative humanities experiences.

2024 DIVISION HIGHLIGHTS

LEH deeply appreciates its funders. Their financial support is critical to expanding educational and cultural initiatives that directly address the needs of individuals and agencies throughout Louisiana. These investments nurture a statewide network of programs that enrich the lives of Louisianans while amplifying Louisiana voices, culture, and history within and beyond the borders of our state. Thanks to the Entergy Charitable Foundation, the distribution of Prime Time Boxes was expanded in the Greater New Orleans area, ensuring that children have access to quality literacy programming during school breaks. The Helis Foundation underwrote the publication of *Passing it On: The Art of John T. Scott* and is ensuring that the book is widely available in public libraries and schools. In all, over 1,300 individuals, corporations, and foundations came together to preserve and promote our state's history and culture.

In 2024, LEH continued its nearly 40-year history of honoring Louisiana's cultural luminaries during the Bright Lights Awards Dinner. On April 23, over 200 guests joined LEH board and staff at the Capitol Park Museum to elevate LEH's mission and celebrate resonant work in the humanities. We are grateful to all event sponsors and attendees.

TOP: LEH staff members distribute Prime Time Boxes.

BOTTOM: Co-author Freddi Evans signs a copy of *Passing It On*.

PHOTOS BY FRANK AYMAMI.



How We Do It

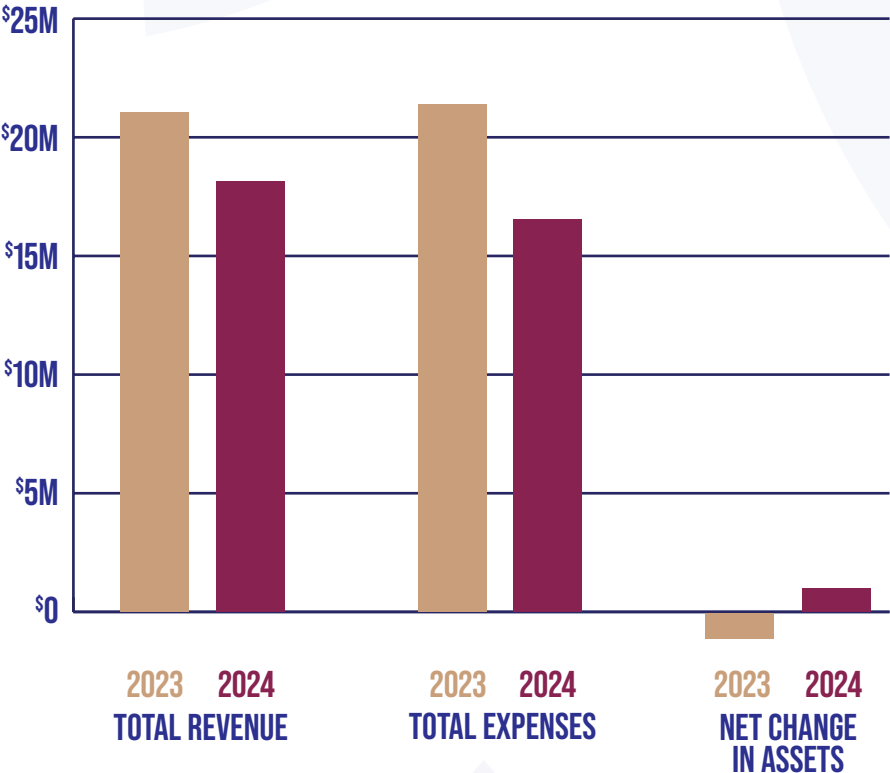
SEE OUR SUCCESS

The 2024 Bright Lights Awards winners.
PHOTO BY BRIAN PAVLICH.

Statement of Activity

COMBINED FINANCIAL SNAPSHOT

LEH & PTI HEAD START



* 2023 INCLUDES \$1.9M IN ACCELERATED DEPRECIATION IN THE HEAD START PROGRAM

NUMBERS PRESENTED HERE ARE UNAUDITED.

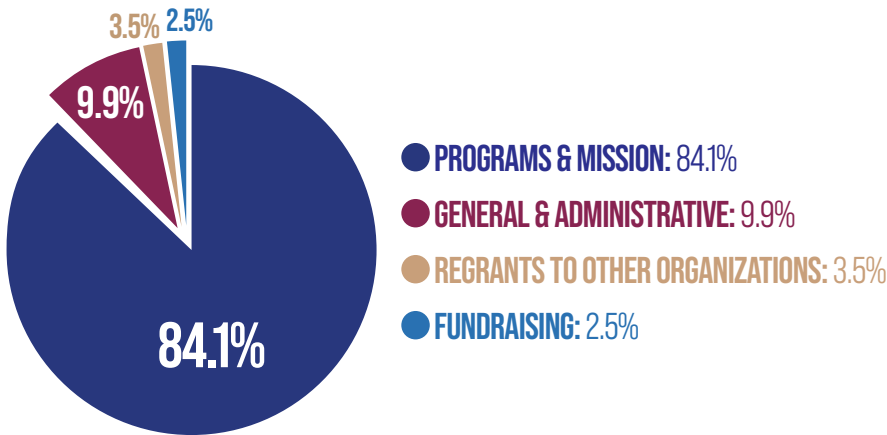
2023 2024

TOTAL REVENUE	\$21,689,713	\$18,224,003
TOTAL EXPENSES	\$22,669,025	\$16,810,945
NET CHANGE IN ASSETS	[\$979,312]	\$1,403,058

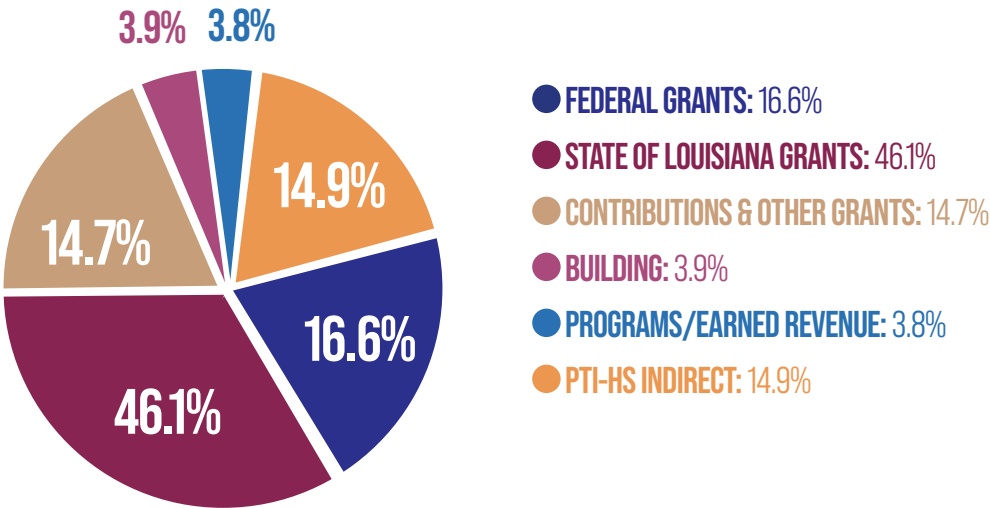
\$1.9M IN ACCELERATED DEPRECIATION IN THE HEAD START PROGRAM

STATEMENT OF FUNCTIONAL EXPENSES

FY24 LEH/PTI HEAD START CONSOLIDATED OPERATING EXPENSES BY FUNCTION



FY24 LEH REVENUE SOURCES



NOTE: THE PERFORMANCE OF LEH'S INVESTMENT PORTFOLIO/RESERVES IS NOT INCLUDED IN THE CHART.

10/31/2024 STATEMENT OF FINANCIAL POSITION

	2023	2024
TOTAL ASSETS	\$14,059,788	\$15,807,781
TOTAL LIABILITIES	\$2,181,599	\$1,966,534
TOTAL NET ASSETS	\$11,878,189	\$13,841,247
TOTAL LIABILITIES & NET ASSETS	\$14,059,788	\$15,807,781

NUMBERS PRESENTED HERE ARE UNAUDITED.

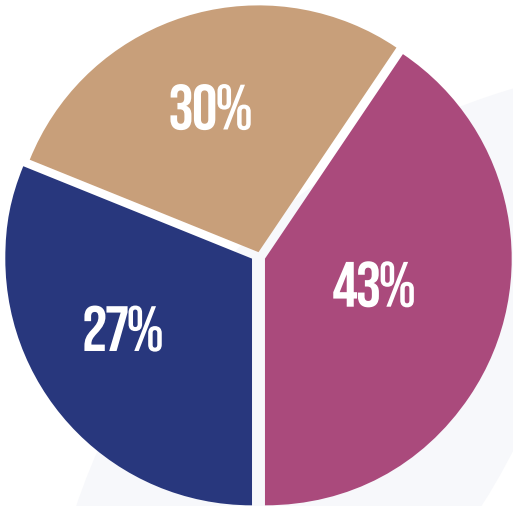
LEH INVESTMENTS BY STRATEGIC GOAL 2024

PROGRAM EXPENSES BREAKDOWN

GOAL 1
INVESTMENTS IN
HUMANITIES
EDUCATION
27%

GOAL 2
INVESTMENTS IN
HUMANITIES CONTENT
ABOUT LOUISIANA
30%

GOAL 3
INVESTMENTS IN
HUMANITIES
EXPERIENCES
43%
[EXCLUDES HEAD START PROGRAM]





Donors, Supporters, & Partners

The work of the Louisiana Endowment for the Humanities depends upon the generosity of the hundreds of supporters who share our vision that everyone can realize their full potential through the humanities.

The impact of the support provided by individuals, corporations, foundations, the National Endowment for the Humanities, and the state of Louisiana is reflected in this report and in the experiences of the people engaged in our programs. The following pages recognize those who joined us in our mission in fiscal year 2024.

We can do so much because of the generosity of so many. From the Board of Directors and staff to our benefactors, thank you.

N.B.: The donations listed here are for the fiscal year that ran from November 1, 2023, to October 31, 2024. Donations received after October 31, 2024, will be credited in next year's annual report.

TOP: The 2025 Bright Lights Awards Dinner.

BOTTOM: Dr. Nick Mueller, 2024 Champion of Culture, accepts his award.
PHOTOS BY BRIAN PAVLICH.

2024 DONORS & SUPPORTERS

CORPORATIONS AND FOUNDATIONS

Acadian Companies
Baptist Community Ministries
Basin Arts
Bayou Lafourche Folklife
and Heritage Museum
Benefit Analyst, LLC
Boh Bros. Construction Co., LLC
Buras Family Living Trust
Cahn Family Foundation
Charles Lamar Family Foundation
CITGO
Coalition to Restore Coastal Louisiana
Community Foundation of North Louisiana
Etergy Charitable Foundation
Eugenie & Joseph Jones Family Foundation
Goldring Family Foundation
Greater New Orleans Foundation
Gulf Coast Bank and Trust Co.
Gumbo Foundation
Integrated Resource Management, LLC
Jean and Saul A. Mintz Foundation
Johnson Law Office
Kathleen O'Brien Foundation
Keller Family Foundation
Marrero Land & Improvement Association, Ltd.
Moyse Family Foundation
New Orleans Jazz & Heritage Foundation
New Orleans Mayor's Office of Cultural Economy
New Orleans Tourism and Cultural Fund
NOLA Restorations
Patrick F. Taylor Foundation
Porter Lyons, LLC
RosaMary Foundation
Shell Oil Company
Stuller Family Foundation
Swoop-Duggins House
TELE-LOUISIANE LLC
The Helis Foundation
United Way of Southeast Louisiana
W.K. Kellogg Foundation
Woldenberg Foundation

HUMANIST (\$10,000+)

Stephen Sherrill

ALTRUIST (\$5,000-\$9,999)

Willie L. Mount

MENTOR (\$1,000-\$4,999)

John Barbry
Gerald Boudreaux
Becky and Wyatt Collins
Sharlene Sinegal-DeCuir
John L. Dardenne
Rosemary and Randy Ewing
Stewart Ewing
Cordell and Ava Haymon
Linda and Joseph Holyfield
Mark S. Manguno
John and Annette Maxwell
Donna McDonald
Gregory L. Nesbitt
Cathy and Hunter Pierson
Laura and Joseph Prisco
Mimi Moyse Schlesinger and Claude Schlesinger
Mary Ann Sternberg
Caroline C. Stewart
Winifred and Kevin P. Reilly, Jr.

PATRON (\$500-\$999)

Martha Brown
Ty Bromell
Patrick and Harriet Carrier
V. Thomas Clark, Jr.
Laurie and Warren Doyle
Susan Gundlach
Louise Jenkins
Liz Mangham
Laura Lane McNeal
Mikki and Kellen Mathews
Rod and Mattie Olson
Piper E. Parker
Miranda Restovic
Laurie and Peter Ricchiuti
Susan Roach
Anna Rita Scott
Ms. Amal Shamieh
John and Louise Simon
Caroline G. Theus
Hardoncourt "Trip" Trepagnier
Nick and Georgia Trist
Mike and Kim Wampold
John Wilson

SPONSOR (\$250-\$499)

Elizabeth Ary
David Barry
J P Barr

Drs. Carolyn and Harry Bruder
Phyllis L. Burton
Evelyn L. Merz and John Berlinghoff
David Cassidy
Brian Cheramie
Arthur A. Crais, Jr.
Jenni Daniel and Sara Slaughter
Linda Dawson
Mary C. Decker
Perla Delson
Ann B. Dobie
Marianne Fisher-Giorlando
Casey Fletcher
Danny and Lori Gilder
Sherry S. Guarisco
Florent Hardy, Jr.
William Jernigan
Gene Kansas
Elisabeth Kraft
Henry Lacey
Cynthia and Robert LeBreton
Brigitta L. Malm
John Marceaux
Paul Martin
Stephen Moses
Kristina Peterson
Wendell Riley
Anthony M. Rotolo
Andre and Robbie Rubenstein
Tom and Linda Sagera
Cary Saurage
Brian Schneider
Dana Stinson
Jane and William Sizeler
Laverne Thomas
Christie A. Weeks
Larry and Melanie Watkins
Ralph Webb
Ron and Ruth White
Holly Wilson

ADVOCATE (\$100-\$249)

Jerome Alesi
Eric Arender
James Barnett
William Baute
Earleen Bergeron
Mary Berry
Brad Black
Jo Blankenship

Al Bordelon
Lawrence Boston
Charmaine Boulmay
Paula and Eddie Braxton
Elbert Brewer
Glenny Lee Buquet
Paul Buras
June B. Butler
Doug Caldwell
Terence T. Casey
Darrel and Christy Colson
Russ Copping
Lana Corli
Mary Len Costa
Marsha and Jim Daniel
Gretchen Dean
Dave Domingue
George Salb Dominguez
Lloyd and Susan Dore
Edna Anne Dunn
Susan Eble
Connie Eble
Jude Thaddeus Fanguy
Randall and Madelaine Feldman
Larry Ferguson
Gloria Fiero
George R. Foster
Arthur and Mary Helen De Fraites
Kathleen Frater
Mavis Fruge
Charles Gaines
Edgar D. Gankendorff
Thomas Gault
Ann Gilbert
Todd and Nancy Gilbertson
Michele Goldfarb
L. W. and Nancy Gray
Jeanette and Pete Gregory
Barbara and Jeffrey Griffin
Holly Groh
Stacy Guice
Sally Herpin
Calvin Hicks
Thomas and Ann Marie Hightower
Lisa Hill
Rosalind F. Hinton
David Holcombe
Cindy Hudson
G. Archer Frierson II
Catherine and Johnny Indest

Drew and Julie Jardine
 Bennett Johnston
 Jean Jones
 Theodore Jones
 William R. Edwards Jr.
 Henry Folse, Jr.
 Francis Madary, Jr.
 John Day, Jr.
 Isaac M. Gregorie, Jr.
 Alfred J. Guillaume, Jr.
 Bettie T. Kaston
 Laverne Kappel
 W. Ellen Smart King
 Elizabeth Landis
 Lorraine LeBlanc
 Edward H. Leatherman
 Richard Levich
 Saundra K. Levy
 Michelle and Michelle MacFadyen
 Renee and Paul Major
 Nora Marsh
 Ann Kendrick
 Margaret A. McKenzie
 Catherine McVea
 Joyce R. Metoyer
 Roger Moore
 Cynthia A. Murray
 Denis Murrell
 Lisa Nelson
 Ryan Neustrom
 Teresa Parker
 David and Sheela Plater
 Diane and Andrew Plauche
 Natasha and Samuel Ramer
 Gregory B. Rigamer
 Harriet Riley
 Christina Riquelmy
 David "Rocky" Rockett
 Gerald Role
 Carol Ross
 Constance Roy
 Rosemary G. Ryan
 Arman Sadeghpour
 Louise Sander
 Denise Sassone
 Mark F. DeWitt and Susan Schleifer
 Edmund Schrenk
 Laura Scott
 Jay Shames
 Anne Simon
 Ruth E. Smith
 Pamela Smith and Brent Smith
 Pamela Sontag

David Speights
 Shelley Stocker
 Chris Stokes
 N. Scott Thomas
 William E. Trotter
 Liesel Wabnig
 Clyde Watkins
 Penny Weaver
 Danny Williamson
 Beth Willinger
 John Wirt
 John W. Yeargain

MEMBER (\$50-\$99)

Joan Arnold
 Richard and Ruth Autin
 Ellen Bane
 Grace Bareikis
 Jonathan Baron
 Olivia Bartlett
 Aimee Bell
 John E. Bergstedt
 Warren and Carol Billings
 Alice Sagrera Boynton
 Roger Brown
 Michelle Burr
 Lorraine D. Cagle
 Kathleen Callaghan
 William Campbell
 Ruth Canales
 Betty Caro
 Kevin Caston
 Charles R. Chaney
 Richard B. Chardkoff
 Melinda Chateauvert
 Judith and Dave Curry
 Marcia Daigre
 Afua Sarah A. Dave
 Christopher Davis
 Anna C. Davis
 Carl Davis
 Aaron DeBlanc
 Amy DeWys
 Colette Dean
 Stephen Derbes
 Rebecca Descant
 Daniel Dicharry
 Maureen Dobuski
 Thomas Douglass
 Robert E. Ducasse, Jr.
 Al Dunn
 Margaret Dean and Brent Smith
 Mark Ellis
 Femi Euba

Donald C. Faust
 Helen Fazio
 John Ferstel
 Julian Feibelman, Jr.
 Rien Fertel
 Janie Flournoy
 Danny Ford
 Rochelle L. Ford
 Jonathan Foret
 Anna Fournet
 Patricia Friedmann
 Steven Furr
 Marie Annette Fuselier
 Joseph and Paulette Gale
 Mary F. Gaubert
 J. Louis Gibbens
 Maureen Goldware
 Melanie Goudelocke
 J. Darrell Green
 Julie Guidry
 Jessica Hack
 John E. Hager
 Phyllis R. Hamilton
 Patrick Hargon
 Chestee Harrington
 Merle T. Harris
 Katherine Hill
 Christopher Hines
 Henry Holmes, Jr.
 Susan Hoskins
 Michael Humphrey
 Henley Hunter
 Paulette Hurdlik
 Melanie Bennett Hurta
 Barbara B. Insidioso
 John Irvin III
 Celia A. Jones
 Jan O. Shoemaker and Dennis Jones
 Michael A. Jones
 Ellen Kennon
 Cassandra Knobloch
 Virginia Kurzweg
 David Labby
 Melissa Lake
 Pierre Landaiche
 Barbara Laughlin
 Rodney LeBlanc
 Gary de Leaumont
 Robert Leighninger, Jr.
 Malia-Jaye Lewis
 W. Conway Link
 Frances Marie Lowman
 Nancy W. Manuel

Kevin Martinez
 William and Cassie McCain
 William and Nadine McCall
 John G. W. McCord
 Virginia Merritt
 Jacquelyn L. Milan
 Carol Mills
 Michael and Marilyn Mislove
 Carter Stevens Molony
 Tameika Moore
 Robert L. Morrow, Jr.
 Meg Mosteller-Barnum
 Ted Naron
 Kim and Elizabeth Nehrbass
 Sandra Norman
 Kayla Pagel
 Walter Parr
 Ann M. Patteson
 Roberta S. Phillabaum
 Holly Pisarello
 Alisa Plant
 Nathan Ponder
 Eugene Richardson
 Samuel Rodgers
 Morgan Randall
 Harry Rosenberg
 Karen Rowley
 J Craig Scherf
 Edna Marie Campbell Sevin
 Maude S. Sharp
 Norma Sherman
 Dan Smetherman
 Megan Holt and Jermaine Smith
 Elisa Speranza
 John Stevenson
 Timothy Strain
 Cheryl and F. Wayne Stromeier
 Myra Tener
 Henry J. Thiele III
 Marion and Jack Thomson
 W.P. Tucker
 William and Leslie Tuggle
 Michael Holly and Denise Tullier-Holly
 Carrington Tutwiler
 Flo Ulmer
 Daniel H. Usner, Jr.
 Peg Usner
 Craig E. Vincent
 Donna Wakerman
 Alan Walker
 Chris W. Weaver
 Marjorie and Roy Weiner
 Gregory Wells

Betty Westbrook
 Anne J. Wilbourne
 Y'Zell Williamson
 Daniel Wershow

BRIGHT LIGHTS SPONSORS

PRESENTING

Entergy

PLATINUM

Gayle and Tom Benson
 Charitable Foundation
 Lexus of New Orleans
 Price LeBlanc Toyota Lexus
 Moyse Family Foundation

GOLD

AVALA
 Haynie Family Foundation
 Jones Walker LLP
 The Helis Foundation
 The Tunica-Biloxi Tribe of Louisiana

TABLE SPONSORS

CAPTRUST
 Cindy T. and Christopher E. Cenac Sr.
 Decuir, Clark and Adams LLP
 Dow
 Mark and Rae Gremillion
 LSUS Foundation
 Melinda and Morris Mintz
 National World War II Museum
 Union Pacific Foundation

PREMIUM PATRON

Ty and Kim Bromell
 Melissa Perrett Cook
 John W Deming & Bertie Murphy
 Deming Foundation
 Rosemary and Randy Ewing
 First Horizon
 Klara and Daniel Hammer
 Hancock Whitney Bank
 Healthy Blue
 Linda and Joe Holyfield
 Iberia Preservation Alliance
 Charles Vincent
 Sharonda Williams

2024 Program Partners

Since 1971 LEH has partnered with organizations throughout Louisiana to support and produce public programs and educational experiences that truly enrich lives. For more than 50 years, LEH has worked in communities, small and large, to build pathways for lifelong learning for every generation, from every walk of life, in all 64 Louisiana parishes.

Repeat partners are only listed once.

A Prime Time program participant at Terrytown Elementary.
COURTESY OF TERRYTOWN ELEMENTARY SCHOOL.

EDUCATION GRANTS AWARDED

PARTNER SITE

AC Alexander School
 Allen Ellender School
 Amelia Branch Library
 Asbury United Methodist Church
 Ascension Parish Sheriff's Wag Center
 Audubon Charter School - Gentilly
 Caddo Heights Math/Science Elementary
 Carver-McDonald Branch Library
 CMJ Smart Start Learning
 Community Academies of New Orleans -
 Esperanza Charter School
 E. K. Key Elementary School
 East Carroll Parish Library
 Eighty-First Street ECE Center
 Faith Harvest Baptist Church
 Fannie C. Williams Charter School
 Fenton Elementary School
 Forest Park Apartments Community Center
 Franklinton Branch Library
 Hathaway High School
 Helix Aviation Academy
 Herndon Elementary Middle Magnet School
 Homer Plessy Community School
 J S Clark Leadership Academy
 Lafayette Academy Lower School
 Lake Arthur Elementary School
 Langston Hughes Academy
 Lenwil Elementary School Library
 Louisiana Key Academy
 Madison Parish Library
 Many Elementary School
 Martin Behrman Charter School

PARISH

Jefferson
 Jefferson
 St. Mary
 Natchitoches
 Ascension
 Orleans
 Caddo
 Ouachita
 Orleans

 Orleans
 Calcasieu
 East Carroll
 Caddo
 Ouachita
 Orleans
 Jefferson Davis
 Orleans
 Washington
 Jefferson Davis
 East Baton Rouge
 Caddo
 Orleans
 St. Landry
 Orleans
 Jefferson Davis
 Orleans
 Ouachita
 East Baton Rouge
 Madison
 Sabine
 Orleans

PARTNER SITE

Meadowview Elementary
 Midway Elementary Professional
 Development School
 Morning Star Baptist Church Fellowship Hall
 Morris Jeff Community School
 Nehemiah Projects of Acadiana, Inc.
 New Living Word Ministries
 New Orleans Hispanic Heritage Foundation
 New Orleans Public Library - East New Orleans Regional Branch
 New Orleans Public Library, Nora Navra Branch
 New Orleans Public Library, Rosa Keller Branch
 North Caddo Elementary Middle School
 North DeSoto Lower Elementary School
 Our Lady's School
 Phoenix High School
 Pierre A. Capdau S.T.E.A.M. School
 Prime Time at Dodson
 Prime Time at Immaculate Heart of Mary
 Prime Time at Jeanerette
 Prime Time at Willow
 ReNEW Moton Charter School
 ReNEW Schaumburg Charter School
 Ringgold Elementary School
 Spring Ridge Academy
 St. Anthony School
 St. Charles Parish Library - St. Rose Branch
 St. John Community Enrichment Center
 St. Louis Academy
 St. Mary Parish Library - Patterson Branch
 Stonewall Learning Center
 TCA Head Start @ Mahalia Jackson
 Terrebonne Parish Library

PARISH

Bossier

 Caddo
 Natchitoches
 Orleans
 Vermilion
 Lincoln
 Jefferson
 Orleans
 Orleans
 Orleans
 Caddo
 DeSoto
 Calcasieu
 Plaquemines
 Orleans
 Iberia
 Lafayette
 Iberia
 Lafayette
 Orleans
 Orleans
 Bienville
 Jefferson
 Jefferson
 St. Charles
 Morehouse
 St. James
 St. Mary
 Bossier
 Orleans
 Terrebonne

EDUCATION GRANTS AWARDED

PARTNER SITE

Terrytown Elementary
The Gathering
The Helis Foundation John Scott Center
Tried Stone B.C.
Union Parish Library
Urban League Clarence L. Barney Head Start
Urban Strategies - Bienville Basin
W.P. Foster Elementary
Westwood Elementary School
Wildwood Elementary School
Woodland West School
Young Audiences Charter Schools -
Lawrence D. Crocker Campus
Young Audiences Charter Schools -
Kate Middleton Campus

PARISH

Jefferson
St. Bernard
Orleans
Ouachita
Union
Orleans
Orleans
St. Mary
Caddo
East Baton Rouge
Jefferson

Orleans

Jefferson

HUMANITIES GRANTS AWARDED

PARTNER SITE

Acadian Heritage & Culture Foundation, Inc.
Acadiana Center for the Arts
Alexandria Museum of Art
Alison Pelegrin
Alliance Francaise de la Nouvelle-Orléans
Amistad Research Center
Assumption Parish Public Library System
Atelier de la Nature
Banners at McNeese State University of Louisiana
Centenary College of Louisiana
Center for Traditional Louisiana Boat Building

PARISH

Vermilion
Lafayette
Rapides
Statewide
Orleans
Orleans
Assumption
St. Martin
Calcasieu
Caddo
Lafourche

PARTNER SITE

Chinbo, Inc.
Concordia Parish Library
Contemporary Arts Center, New Orleans
Dorcheat Historical Association and Museum, Inc.
East Carroll Parish Library
Friends of the New Orleans Public Library
Grambling State University
Guardians Institute
HARK Festival
Herbert S. Ford Memorial Museum, Inc.
Hermann-Grima + Gallier Historic Houses

PARISH

East Baton Rouge
Concordia
Orleans
Webster
East Carroll
Orleans
Lincoln
Orleans
Caddo
Claiborne
Orleans



Visitors read exhibit information at Free People of Color in St. Landry Parish.
COURTESY OF OPELOUSAS MUSEUM.

PARTNER NAME

Imperial Calcasieu Museum
 Institute for Public Ethnomusicology
 Lafayette Museum
 Lafourche Parish Public Library
 Leona Tate Foundation for Change, Inc.
 LGBT+ Archives Project of Louisiana
 Livingston Parish Library
 Longue Vue House and Gardens
 Louisiana Book Festival
 Louisiana Folklore Society
 Louisiana Old State Capitol Foundation
 Louisiana State University and A&M College Baton Rouge
 Louisiana State University Shreveport
 Museum of the Southern Jewish Experience
 Natchitoches Historic Foundation, Inc
 Natchitoches Tribe of Louisiana
 National Food and Beverage Foundation
 New Orleans Book Festival at Tulane University
 New Orleans Hispanic Heritage Foundation Inc.
 New Orleans Poetry Festival
 Northeast Louisiana Children's Museum
 Northwestern State University/NSU Folk Festival
 Nous Foundation
 Nunez Community College
 NUNU Arts and Culture Collective
 Ogden Museum of Southern Art
 One Book One New Orleans
 Operation Restoration

PARISH

Calcasieu
 Orleans
 Lafayette
 Lafourche
 Orleans
 Orleans
 Livingston
 Orleans
 East Baton Rouge
 Lafayette
 East Baton Rouge
 East Baton Rouge
 Caddo
 Orleans
 Natchitoches
 Natchitoches
 Orleans
 Orleans
 Orleans
 Orleans
 Ouachita
 Natchitoches
 Orleans
 St. Bernard
 St. Martin
 Orleans
 Orleans
 Orleans

PARTNER NAME

Pointe Coupee Historical Society
 Rapides Parish Library
 Red River STEM, Inc./Sci-Port Discovery Center
 Save Our Cemeteries, Inc.
 Southeastern Museums Conference
 Shadows-on-the-Teche
 South Louisiana Wetlands Discovery Center
 SouthArts Literary Arts Fellows
 Southern Forest Heritage Museum
 Southern Screen Film Festival, Inc.
 Southern University and A&M College
 Tennessee Williams/New Orleans Literary Festival, Inc.
 The Current
 The Iberia Cultural Resources Association, Inc.
 Tunica-Biloxi Tribe of Louisiana
 Twin City Art Foundation
 United Houma Nation, Inc.
 University of Louisiana at Lafayette
 University of Louisiana at Monroe
 Washington Parish Library
 West Baton Rouge Historical Association/
 West Baton Rouge Museum
 Whitney Plantation
 WLAE
 World Affairs Council of New Orleans
 WWNO New Orleans Public Radio / University of New Orleans
 Xavier University of New Orleans
 Zydeco Historical & Preservation Society, Inc.

PARISH

Pointe Coupee
 Rapides
 Caddo
 Orleans
 Statewide
 Iberia
 Terrebonne
 N/A
 Rapides
 Lafayette
 East Baton Rouge
 Orleans
 Lafayette
 Iberia
 Avoyelles
 Ouachita
 Terrebonne
 Lafayette
 Ouachita
 Washington
 West Baton Rouge
 St. John
 Orleans
 Orleans
 Orleans
 Orleans
 St. Landry

2024 Staff & Governance

OUR STAFF

Miranda Restovic

President/Executive Director, LEH

Executive Director, Prime Time, Inc.

Patrick Carrier

Chief Operating Officer

Shantrell Austin

Chief of Staff

OPERATIONS AND ADMINISTRATION

Amy Ricke, Director of Human Resources

Erin Van Geffen, Director of Finance

Jessica Brasseur, Office and Facilities Manager

Shana Harrison, Finance Associate

Henry Holmes, Building Engineer

Faye Cecile Lee, Human Resources Coordinator

Bellena Melton, Human Resources Payroll Specialist

THE HELIS FOUNDATION JOHN SCOTT CENTER

Brandon Lewis, Director

Christina Lott, Program Manager

INSTITUTIONAL ADVANCEMENT

Jenni Daniel, Vice President of Institutional Advancement

Lauren Noel, Director of Marketing and Sales

Jennifer Boquet, Senior Marketing Manager

Katie Nunnery, PhD, Grants Coordinator

Laura Escobar-Agon, Advancement Coordinator

PUBLIC PROGRAMS

Josh-Wade Ferguson, PhD, Director of Public Programs/Editor-in-Chief, 64 Parishes

Alexandra Kennon Shahin, Managing Editor, 64 Parishes

Clare Shelburne, Public Programs Manager

GRANTS

Erin Voisin, Director of Grants

Chris Robert, Grants Manager / Associate Media Editor, 64 Parishes

EDUCATION

Sarah Withers, PhD, Vice President of Education Programs

Angel Slater, Assistant Vice President of Education

Sarah DeBacher, Director of Curriculum and Content Development

James Brown, Program Manager

Maya Gore, Program Manager

OUR BOARD OF DIRECTORS

Randy K. Haynie, Chair

Linda Holyfield, Vice-Chair

Mark Gremillion, Treasurer

Kellen Mathews, Secretary

Melinda Mintz,

Immediate Past Chair

John Barbry

Ty Bromell

Chris Cenac, Sr, MD

Rebecca "Becky" Collins

Stewart Ewing

Faye Flanagan

Sherry Guarisco

Phebe Hayes, PhD

Chanler Holden Mittendorf

Liz Mangham

Jody Montelaro

Willie Landry Mount

Nathan Ponder, PhD

Cleland Powell

Laura Prisco

Wendell Riley

David "Rocky" Rockett

Arman Sadeghpour

Marie "Mimi" Moyse Schlesinger

Amal Shamieh

Sharlene Sinegal-DeCuir, PhD

Emily Stine

Kathy Victorian

Sharonda Williams

Holly Wilson, PhD

PRIME TIME HEAD START POLICY COUNCIL

Kenze Sims, President

Natasha Butler

Kimberly Chretien

Clarence Clark

Octavionna Esters

Brittany Fruge

Faith Jefferson

Tashana Jones

Cleveland Latulas

Marie Leger

Marlon Lewis

Jasmine Matthew

Bobbie Meeks

Kaylia Steward

Brianna Thibaux



Contact



leh.org

 **@LAHumanities**

 **@lahumanities**

 **Linkedin.com/company/lahumanities**

Newsletter: bit.ly/LEHnewsletter



64parishes.org

 **@64Parishes**

 **@64Parishes**

 **@64Parishes**

#64Parishes

Newsletter: bit.ly/64Parishesnewsletter



primetimefamily.org

 **@PrimeTimeRead**

 **@AcadianaHeadStart**

 **@primetime5843**

Newsletter: bit.ly/PrimeTimeEmail



 **@JohnScottCenter**

 **@JohnScottCenter**

Newsletter: bit.ly/THFJSCemail

